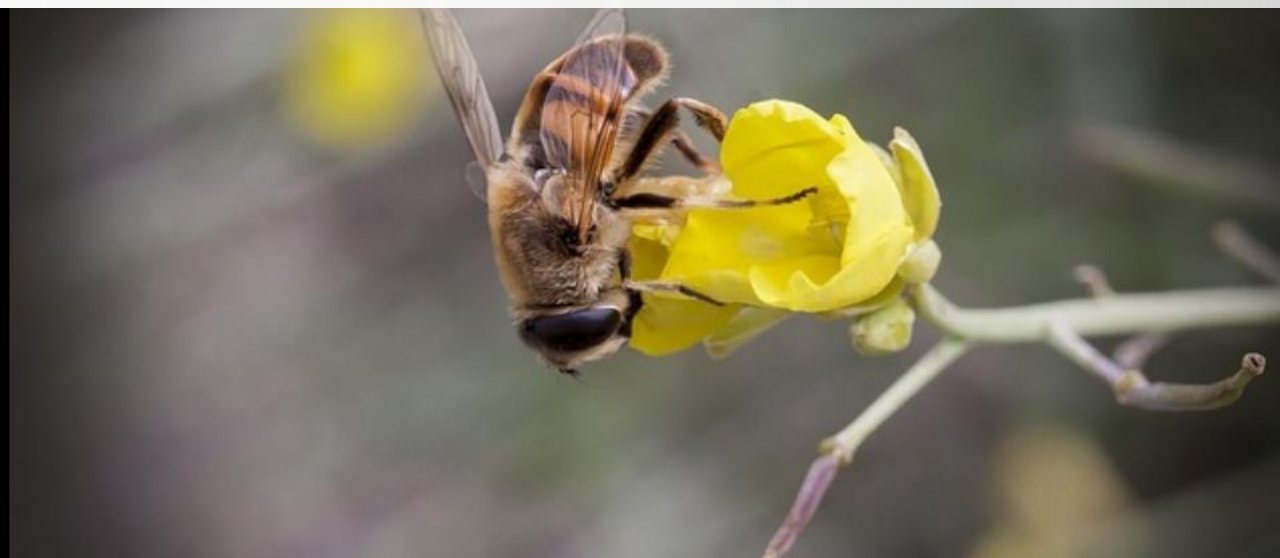




WASTE MANAGEMENT PROGRAMME
GUIDELINES FOR THE LEGAL AND RESPONSIBLE
DISPOSAL OF OBSOLETE PESTICIDES
DECEMBER 2018 EDITION



IMPORTANT NOTICES



OBSOLETE PESTICIDE ARE PESTICIDES THAT ARE BANNED, PROHIBITED FOR USE, UNWANTED, EXPIRED, SPILLED OR LEFT-OVER AFTER SEASON AND NO LONGER OF ANY USE. CONTAINERS WITH PESTICIDE RESIDUES ARE ALSO OBSOLETE PESTICIDES!

OBSOLETE PESTICIDES ARE CLASSIFIED AS HAZARDOUS WASTE (CATEGORY A) BY THE NATIONAL ENVIRONMENTAL MANAGEMENT: WASTE ACT, 2008 (ACT NO. 59 OF 2008) AND MAY ONLY BE DISPOSED OF BY LICENSED HAZARDOUS WASTE MANAGEMENT COMPANIES.

OBSOLETE PESTICIDES MAY NOT BE BURIED OR BURNED ON ANY PREMISES, OR DUMPED INTO WATER BODIES!!! IT IS EXTREMELY DANGEROUS TO DO SO!!

COMPANIES INTERESTED IN PARTICIPATING IN THE CROPLIFE SA WASTE MANAGEMENT PROGRAMME SHOULD PLEASE CONTACT:

DR GERHARD VERDOORN 082-446-8946 GERHARD@CROPLIFE.CO.ZA

DISCLAIMER

CropLife South Africa accepts no responsibility for services rendered by any service providers

DISPOSE OF OBSOLETE PESTICIDES RESPONSIBLY - IT IS THE RIGHT THING TO DO!



SAFEGUARDING AND SECURE STORAGE OF OBSOLETE PESTICIDES

- 1 Ensure, where possible, that obsolete pesticides are in their original containers with their original labels. If labels are damaged, spray over with clear lacquer to preserve labels. Once dried off, cover with thick polyethylene plastic and seal with duct tape.
- 2 If containers are perished or leaking, put such containers into large plastic, open-head drums (over-drums) with their containers as described in paragraph 1 and seal the lids of the open-head drums. Make a list of the products in drums for the inventory as described further down. Make two 8 mm holes in the drum lid to balance pressure.
- 3 Obsolete pesticides without any identification must be marked as **UNKNOWN** in red paint.
- 4 Mark all obsolete pesticides (in original containers or drums) with the words **TOXIC WASTE** in red paint.
- 5 Place the obsolete pesticides in a cool, secure and lockable area in a store with a concrete floor on pallets covered in thick plastic sheeting. This area must not be exposed to direct sunlight.
- 6 Compile a complete inventory of the obsolete pesticides as described in the Annexure. Find labels and safety data sheets (SDSs) on www.agri-intel.com, print and keep these documents in a file. These documents will be required by the hazardous waste disposal service provider.
- 7 Ensure that no unauthorized persons gain access to the obsolete pesticide storage area.



EXAMPLE OF AN OBSOLETE PESTICIDES INVENTORY

Nr	Trade name	Form	Active ingredients	No	CT	CC	CVM	RVM	O-D
1	Azodrin	SL	Monocrotophos	6	ST	PL	25 l	70 l	2,6,8
2	Chlordan	EC	Chlordane	2	ST	NL	20 kg	40 kg	----
3	Paragon	SL	Paraquat	4	PL	NL	20 l	50 l	----
4	Gaucho	FS	Imidacloprid	1	FLB	PL	10 kg	5 kg	1
5	Unknown	Solid	Unknown	1	PL	NL	15 kg	10 kg	-----
6	Sanacarb	GR	Aldicarb	13	FLB	PL	20 kg	95 kg	3,4,7

FORM: formulation such as EC, SC, WG, FS, SL (see next page for list) or if unknown just record as Solid or Liquid

No: number of containers

CT: container type namely ST (steel drum), PL (plastic drum), AC (aluminium canister), PB (plastic bag), FLB (foil lined paper bag or box), PLP (plastic lined paper bag or box), PGC (pressurized gas cylinder)

CC: container condition namely NL (not leaking), PL (perished and leaking)

CVM: container volume or mass in milliliter or liter, gram or kilogram

RVM: residual volume or mass of obsolete pesticide in milliliter or liter, gram or kilogram

O-D: over-drum number (if stored in an over-drum)


PESTICIDE FORMULATIONS AND ABBREVIATIONS

AE	Aerosol	HN	Hot fogging concentrate
AL	Other liquids (self defined)	KN	Cold fogging concentrate
BB	Bait block	LS	Solution for seed treatment
CB	Bait concentrate solid or liquid	RB	Bait ready for use
CS	Capsule suspension	SC	Suspension concentrate
DC	Water dispersible concentrate	SL	Soluble concentrate
DF	Dry flowable water dispersible granule	SP	Water soluble powder
DP	Dusting powder	UL(V)	Ultra low volume liquid
EC	Emulsifiable concentrate	VP	Vapour releasing product
EW	Emulsion, oil in water	WG(D)	Water dispersible granule
FS	Flowable concentrate for seed treatment	WP	Wettable powder
GA	Gas in pressurized containers	WS	Water dispersible powder for seed treatment
GR	Granule ready for use	XX	Other formulations

**CROPLIFE SOUTH AFRICA RECOMMENDED HAZARDOUS WASTE MANAGEMENT COMPANIES**

1	A-Thermal Retort Technologies (Pty) Ltd situated in Olifantsfontein for high temperature thermal destruction offers services nationwide 011-316-1800
2	EnviroServ for safeguarding, transport, storage and disposal nationwide 0800-147-112
3	Interwaste Environmental Solutions for transport, storage and disposal nationwide 011-323-7300
4	Rapid Spill Response for spill containment, clean-up and disposal nationwide 0861-113-467
5	Oricol Environmental Services (Pty) Ltd for disposal nationwide 031-579-2584
6	Lafarge South Africa Holdings (Pty) Ltd cement kiln situated in Lichtenburg for high temperature incineration 011-657-0000
7	Spill Tech for spill containment, clean-up, transport and disposal nationwide 0861-000-366
8	Drizit Environmental for spill containment, transport, clean-up and disposal nationwide 0800-202-202

IT IS THE CLIENT'S RESPONSIBILITY TO ENSURE THAT A SERVICE PROVIDER IS LICENSED BY THE ENVIRONMENTAL AUTHORITIES TO DISPOSE OF HAZARDOUS WASTE. ASK FOR A COPY OF THE SERVICE PROVIDER'S HAZARDOUS WASTE MANAGEMENT LICENSE.