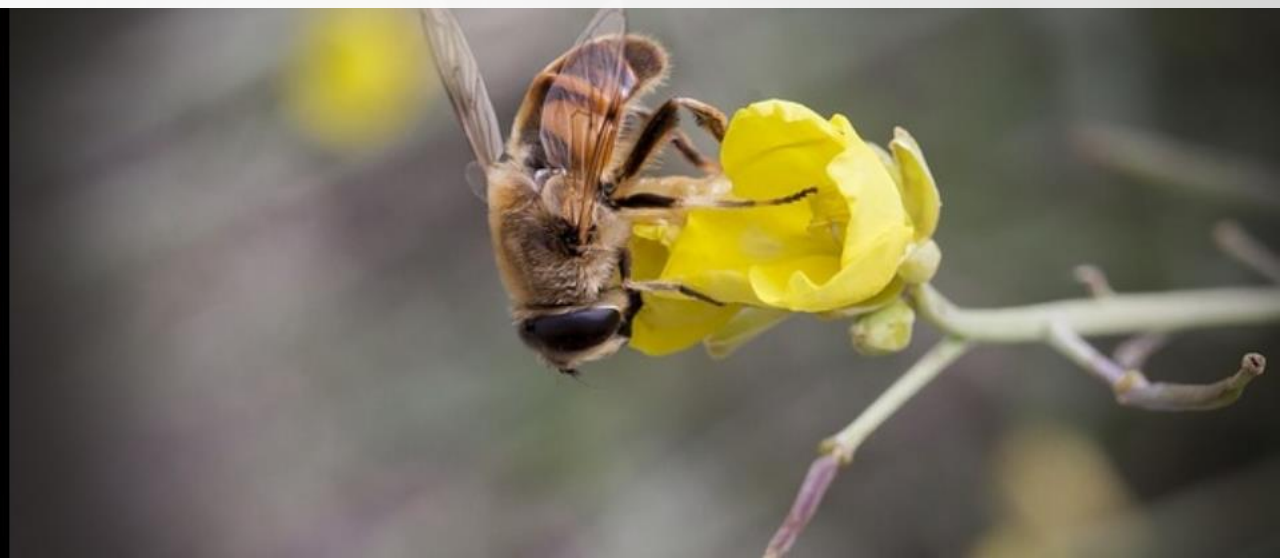




# WASTE MANAGEMENT PROGRAMME

**GUIDELINES FOR CLEANING AND RECYCLING POLYPROPYLENE SEED,  
FERTILIZER AND ANIMAL FEED BAGS  
APRIL 2019 EDITION**



# IMPORTANT NOTICE



**POLYPROPYLENE IS THE MOST COMMONLY USED POLYMER FOR MANUFACTURING LARGE BAGS (50 TO 100 kg) FOR AGRICULTURAL SEED, FERTILIZERS AND ANIMAL FEEDS.**

**IT IS A VALUABLE POLYMER THAT CAN BE RECYCLED BUT REQUIRES SPECIAL CLEANING AND CARE.**

**POLYPROPYLENE DECAYS RAPIDLY, HENCE IS IMPORTANT TO RECYCLE SUCH BAGS IMMEDIATELY AFTER THEY WERE CLEANED.**

**SEED BAGS MUST BE SEPARATED FROM FERTILIZER AND ANIMAL FEED BAGS. SEED BAGS ARE USUALLY VERY CLEAN AND REQUIRE MINIMUM CLEANING WHILE FERTILIZER AND ANIMAL FEED BAGS CONTAIN SOLID PARTICLES THAT MAKE THEM UNFIT FOR RECYCLING UNLESS THEY ARE PROPERLY CLEANED. PLASTIC COLLECTORS AND RECYCLERS WILL NOT TAKE BAGS CONTAMINATED WITH GRIT AND SOLID PARTICLES.**



CLEANING AND RECYCLING BAGS THAT CONTAINED UNTREATED OR PESTICIDE TREATED SEED	
1	Empty the bag completely by shaking vigorously with the open end facing downwards.
2	Turn the bag inside out and hose off with a strong jet of water for 30 seconds over soil in the crop field.
3	Shake all the water off the bag.
4	Repeat steps 2 and 3 twice.
5	Remove the cotton stitching from both ends and if not possible, cut the ends with the stitching off. Dispose of the cotton and cut-off ends with normal solid waste.
6	Dry the bags out and bind into bundles.
7	Contact one of the CropLife SA approved collectors/recyclers and arrange for them to collect or receive the bags as soon as possible.





## CLEANING FERTILIZER AND ANIMAL FEED BAGS

- 1 Empty the bag completely by shaking vigorously with the open end facing downwards.
- 2 Turn the bag inside out and hose off with a strong jet of water for 30 seconds onto fallow soil preferable in the crop field.
- 3 Shake all the water off.
- 4 Repeat steps 2 and 3 twice.
- 5 Remove the cotton stitching from both ends and if not possible, cut the bag ends with the stitching off. Dispose of the cotton and cut-off ends with normal sold waste.
- 6 Dry the bags and bind into bundles. Store the bundles securely out of direct sunlight in a cool place.
- 7 Contact one of the CropLife SA approved collectors/recyclers and arrange for them to collect or receive the bags.



## USING THE SERVICES OF CROPLIFE SOUTH AFRICA APPROVED SERVICE PROVIDERS

1	Contact one of the service providers on the list of CropLife South Africa approved collectors and recyclers. The list is available under Waste Management on <a href="http://www.croplife.co.za">www.croplife.co.za</a> .
2	Arrange with the service provider to deliver the triple rinsed empty plastic pesticide containers to their premises or to have it collected from the farm.
3	Insist on being issued with a CropLife South Africa Certificate of Adequate Disposal for the containers. It is a compliance requirement for export producers that are audited by certification agencies such as GlobalGAP.
4	Keep a record of all the certificates as mentioned above for audit purposes.
5	Refrain from using service providers that are not approved by CropLife South Africa.
6	Aim to have triple rinsed containers disposed of at least once every quarter.
7	Store the caps separately in a plastic bag or drum to be collected by the recycler or collector.

**SERVICE PROVIDERS WILL NOT COLLECT OR RECEIVE CONTAINERS THAT HAVE NOT BEEN TRIPLE RINSED. SERVICE PROVIDERS WILL NOT ISSUE CERTIFICATES OF ADEQUATE DISPOSAL IF THEY HAVE NOT COLLECTED OR RECEIVED THE CONTAINERS.**