

## Management and disposal of obsolete stocks

## Bestuur en wegdoen van uitgediende voorraad

# STEWARDSHIP RENTMEESTERSKAP

**62%**

OF EMPTY PLASTIC PESTICIDE CONTAINERS IN SOUTH AFRICA ARE COLLECTED AND RECYCLED

THAT'S ENOUGH ELECTRICITY TO POWER AN AVERAGE SOUTH AFRICAN HOUSEHOLD FOR



**6**  
MONTHS

**62%**

VAN LEË PLASTIESE PLAAGDODERHOERS IN SUID-AFRIKA WORD VERSAMEL EN VERWERK

DIS GENOEG ELEKTRISITEIT VIR 'N ALGEMENE SUID-AFRIKAANSE HUISHOUDING VIR



**6**  
MAANDE

BY  
**45+**

CROPLIFE SA APPROVED SERVICE PROVIDERS

EVERY TON OF RECYCLED PLASTIC SAVES AROUND

**6,000**

KILOWATT-HOURS OF ELECTRICITY

DEUR  
**45+**

CROPLIFE SA GOEDGEKEURDE DIENSVERSKAFFERS

ELKE TON VERWERKDE PLASTIEK SPAAR OMTRENT

**6,000**

KILOWATT-URE SE ELEKTRISITEIT

THIS PLASTIC CAN BE RECYCLED INTO A VARIETY OF USEFUL PRODUCTS  
HIERDIE PLASTIEK KAN IN 'N VERSKEIDENHEID NUTTIGE PRODUKTE VERWERK WORD

CAR BATTERY CASES  KARBATTERY KISTE  AGRICULTURAL FENCE POSTS  LANDBOU HEININGPALE  SEWAGE PIPES  RIOOL-PYPE



## Contact us

For more information about stewardship or to access a wealth of resources about the topic, visit the CropLife SA website [www.croplife.co.za](http://www.croplife.co.za)

Alternatively, contact us on +27(0)87 980 5163 or send an email to [info@croplife.co.za](mailto:info@croplife.co.za)

## Kontak ons

Vir meer inligting oor rentmeesterskap of vir toegang tot 'n magdom hulpbronne oor die onderwerp, besoek CropLife SA se webtuiste [www.croplife.co.za](http://www.croplife.co.za)

Anders skakel ons gerus by +27(0)87 980 5163 of stuur 'n e-pos na [info@croplife.co.za](mailto:info@croplife.co.za)

## What is Stewardship?

Stewardship is a life cycle approach to crop protection product management to ensure safe production, transportation, storage, handling, application and use of the product, as well as the proper disposal of waste.

## Wat is Rentmeesterskap?

Rentmeesterskap is 'n lewensiklus benadering tot gewasbeskerming produkbestuur om die veilige vervaardiging, vervoer, stoor, hantering, toediening en gebruik van die produk, sowel as die behoorlike wegdoen van afval te verseker.

[info@croplife.co.za](mailto:info@croplife.co.za)

+27(0)87 980 5163

## Why do we need stewardship?

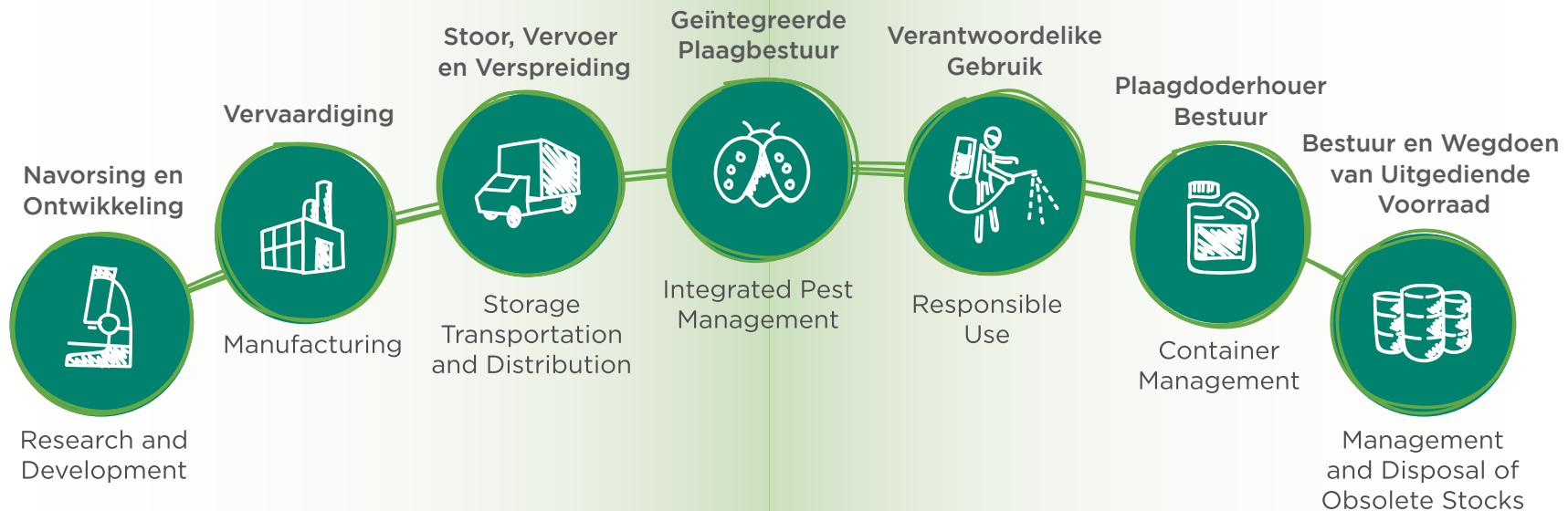
The use of crop protection products is essential for maintaining and increasing agricultural productivity and improving farmer livelihoods in South Africa.

However, this must be achieved with minimum risk to human health and the environment so as to ensure sustainable, safe and affordable food production, and therefore food security, in South Africa.

## What is the life-cycle approach?

The life-cycle approach to stewardship is a responsible and ethical way to manage crop protection products from their discovery and development to their use and the final disposal of any waste.

The overall aim of the stewardship approach is to maximise the benefits and minimise any risk, from using crop protection products.



## Hoekom benodig ons rentmeesterskap?

Die gebruik van gewasbeskerming-produkte is noodsaaklik om landbou produktiwiteit te onderhou en verhoog so wel as om die lewensbestaan van boere in Suid-Afrika te verbeter.

Dit moet egter met minimum risiko vir menslike gesondheid en die omgewing bereik word, ten einde volhoubare, veilige en bekostigbare voedselproduksie, en derhalwe voedsel-sekerheid te verseker.

## Wat is die lewensiklus benadering?

Die lewensiklus benadering tot rentmeesterskap is 'n verantwoordelike en etiese wyse waarop gewasbeskerming-produkte vanaf hul ontdekking en ontwikkeling, tot en met hul gebruik en wegdoening van enige afval, bestuur word.

Die oorhoofse doel van die rentmeesterskap benadering is om die voordele van gewasbeskerming-produk gebruik te vermeerder en die risiko's te verminder.

## Research and development

The majority of CropLife SA's supplier members develop new products, some of which may be international companies developing new chemistry or new biologicals while local companies develop new products based on existing chemistry and biologicals.

Research into new combinations of existing chemicals often result in innovative pesticides that are marketed to address difficult pest issues.

## Manufacturing

The majority of pesticides sold in South Africa are locally formulated using imported technical materials. The manufacturing and formulation plants are operated by professional scientists and engineers to deliver high quality products for the agricultural and public health sectors.

Through the adoption of good manufacturing practices, the industry aims to protect its neighbours, its employees and the environment. National and international standards are strictly adhered to, and international standards are adopted (ISO 14000 and 9000 in particular).

## Storage, transportation and distribution

CropLife SA developed guidelines for members to acquaint themselves with the compliance issues around warehousing, storage and transportation of pesticides. Most members use the services of registered and licensed dangerous goods transport companies while others have their own fleets of certified vehicles and drivers.

Pesticide stores at distribution and agent levels are built according to the SA National Standard 10206 for safe use and storage of pesticides.

## Navorsing en ontwikkeling

Die meerderheid van CropLife SA se verskaffer-lede ontwikkel nuwe produkte waarvan sommige internasionale maatskappye is wat nuwe chemie of biologiese middels ontwikkel, terwyl plaaslike maatskappye nuwe produkte wat op bestaande chemie of biologie gebaseer is, ontwikkel.

Navorsing in nuwe kombinasies van bestaande chemie lei dikwels tot innoverende plaagdoders wat bemark word om moeilike plaagkwessies aan te spreek.

## Vervaardiging

Die meerderheid van plaagdoders in Suid-Afrika word plaaslik geformuleer deur om ingevoerde tegniese materiaal te gebruik. Die vervaardiging- en formuleringsaanlegte word deur professionele wetenskaplikes en ingenieurs bestuur om hoë gehalte produkte vir die landbou- en openbare gesondheid-sektore te lewer.

Deur om goeie vervaardigingspraktyke toe te pas, streef die industrie daartoe om sy bure, werknemers en die omgewing te beskerm. Nasionale en internasionale standaarde word streng nagekom en internasionale standaarde word aange- neem (spesifiek ISO 14000 en 9000).

## Stoor, vervoer en verspreiding

CropLife SA het riglyne vir sy lede ontwikkel om hulself met die nakoming van kwessies rondom pakhuis, stoor en vervoer van plaagdoders te vergewis. Meeste lede gebruik dienste van geregistreerde en gelisensieerde gevaarhoudende goedere vervoermaatskappye, terwyl ander hul eie vloot van gesertifiseerde voertuie en bestuurders het.

Plaagdoderstore op verspreider- en agentvlakke word volgens die SA Nasionale Standaard 10206 vir die veilige gebruik en stoor van plaagdoders gebou.



## Integrated pest management

Integrated Pest Management is a system of managing pests which is designed to be sustainable. It involves using the best combination of cultural, biological and chemical measures for particular circumstances, including plant biotechnology as appropriate.

This provides the most cost-effective, environmentally sound and socially acceptable method of managing diseases, insects, weeds and other pests in agriculture.

## Responsible use

The majority of CropLife SA's supplier and distribution members offer basic training to clients and farm workers on responsible use based on a module developed by CropLife SA. An advanced responsible use training module is also available for members to train their own staff and agro-chemical agents.

## Container management

CropLife SA has a well structured empty container management system with collectors and recyclers that have been vetted and approved as reliable and ethical operators. They assist farmers by redeeming triple-rinsed empty plastic pesticide containers and recycling the containers into other valuable plastic commodities.

All CropLife SA approved service providers issue farmers with a Certificate of Adequate Disposal that export producers require for their GlobalGAP certification.

CropLife International has recognised CropLife South Africa as the one of the top ten countries in the world in terms of effective container management. CropLife SA is also in negotiations with recyclers to start collecting and recycling woven polypropylene bags that are used for some of the granular formulations and chemically treated seed.

## Geïntegreerde plaagbestuur

Geïntegreerde plaagbeheer is 'n sisteem wat ontwerp is om volhoubaar te wees. Dit behels die beste kombinasie van kulturele, biologiese en chemiese maatreëls vir spesifieke omstandighede, insluitend toepaslike plantbiotegnologie.

Dit bied die mees koste-effektiewe, omgewingsgesonde en sosiaal aanvaarbare metode om siektes, insekte, onkruid en ander plae in landbou te bestuur.

## Verantwoordelike gebruik

Die meerderheid van CropLife SA se verskaffer en verspreider lede bied basiese opleiding aan kliënte en plaaswerkers oor die verantwoordelike gebruik van plaagdoders wat op 'n CropLife SA-ontwikkelde module gebaseer is. 'n Gevorderde verantwoordelike gebruik module is ook vir lede beskikbaar om hul eie werknemers en landbouchemiese agente op te lei.

## Plaagdoderhouer bestuur

CropLife SA het 'n goed-gestruktureerde leë plaagdoderhouer-bestuur sisteem met versamelaars en verwerkers wat as betroubare en etiese operateurs goedgekeur is. Hulle help boere deur om leë, driemaal gespoelde plastiek plaagdoderhouers te herwin en in waardevolle plastiese kommoditeite te verwerk.

Alle CropLife SA goedgekeurde diensverskaffers reik 'n sertifikaat van vernietiging aan uitvoerprodusente wat vir hul GlobalGap sertifisering benodig word.

CropLife Internasionaal het CropLife SA as een van die top tien lande in die wêreld in terme van effektiewe plaagdoderhouer bestuur erken. CropLife SA is ook besig om met verwerkers te onderhandel om geweefde polipropileen sakke wat vir verkorrelde formulerings en chemies-behandelde saad gebruik word, te versamel en verwerk.